



## Pinch solenoid valve 3/2 way N.C. Direct acting - Bidirectional

31Z30G3S95

### PRESENTATION:

Direct acting S.V., producing no turbulences, for interception of fluids compatible with the construction materials. Minimum operational pressure is not required. This S.V. allow bidirectional flow and avoid any dead space. The materials used and the tests carried out ensure maximum reliability and duration.

**USE:** Automation, analysis and medical.

**COILS:** 14W 24V DC ED 100% - Ø 13

**COIL HOUSING AND COIL FORMER MATERIAL ARE  
MADE BY 100% VIRGIN MATERIAL.**

Environment temperature	
- 10°C	+ 40°C

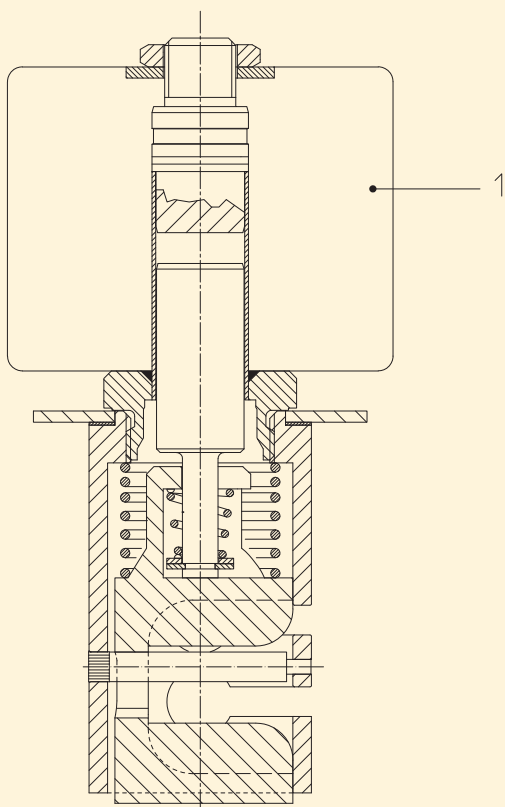


Tubings		Code	Pinching force (g)	Power absorption	Pressure max	Weight (g)
Ø int. (mm)	Ø ext. (mm)			watt	bar	
6,4	9	31Z30G3S95	1250	14	1	500

### Note:

This S.V. is suitable for soft silicon tubings with hardness  $55 \pm 3$  shore A | Tubing are not included in our supply | Available on request and with minimum quantities.

The "ODE " reserves the right to carry out technical and aesthetic modifications without prior notice.



#### MATERIALS:

**Body**

Anodized Aluminium

**Welded armature tube**

Stainless steel AISI series 300 +  
Brass - UNI EN 12164 CW614

**Fixed core**

Stainless steel AISI series 400

**Plunger**

Stainless steel AISI series 400

**Spring**

Stainless steel AISI series 300

**Pinching device**

POM C=Acetalic resin

**On request:**

**Connector**

Pg 9 or Pg 11

**Connector conformity**

ISO 4400

#### FEATURES:

**Electrical conformity**

IEC 335

**Protection**

IP 65 EN 60529 (DIN 40050)  
with coil fitted by connector.

#### SPARE PARTS:

**1. Coil:**

See coils list

#### DIMENSIONS:

