



# Solenoid valve 3/2 way N.C. - Universal Direct acting - Latching coils

**31A3FB15-U**  
Latching coils

## PRESENTATION:

Direct acting S.V. for interception of fluids compatible with the construction materials.  
Opening is obtained by a ~ 20 msec pulse, and closing by another ~ 20 msec pulse, with reversed polarity.  
Minimum operational pressure is not required.  
The materials used and the tests undertaken ensure maximum reliability and duration.

**USE:** Automation  
Heating

**PIPES:** G 1/8

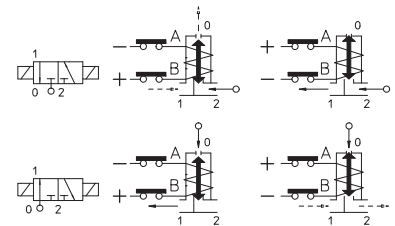
**COILS:** BDA05006LS 155°C (class F)  
BDA05009LS 155°C (class F)  
BDA05012LS 155°C (class F)  
BDA05024LS 155°C (class F)

**COIL HOUSING AND COIL FORMER MATERIAL ARE  
MADE BY 100% VIRGIN MATERIAL.**

Max. allowable pressure (PS) 40 bar

Ambient temperature:

See coils catalogue page for its compatibility.



Gaskets	Temperature		Medium
B=NBR (nitrile rubber)	- 10°C	+ 90°C	Air, inert gas, water

Pipe ISO 228/1	Code	Coils code	Voltages VDC	Max viscosity		Ø mm	Kv l/mn	Power watt	Pressure		
				cSt	° E				min bar	M.O.P.D.	
										N.C.	N.O.
G 1/8	31A3FB15-U	BDA05006LS	6	12	~ 2	1,5*	1,4	5	0	6	8
		BDA05009LS	9								
		BDA05012LS	12								
		BDA05024LS	24								

## Note

\* 3rd way exhaust= Ø 1,5 mm

Also available with brass body without lead.

The "ODE" reserves the right to carry out technical and aesthetic modifications without prior notice.

## MATERIALS

<b>Body</b>	Brass - UNI EN 12165 CW617N
<b>Armature tube</b>	Stainless steel AISI series 300
<b>Fixed core</b>	Stainless steel AISI series 400
<b>Plunger</b>	Stainless steel AISI series 400
<b>Phase displacement ring</b>	Copper - Cu 99,9%
<b>Spring</b>	Stainless steel AISI series 300
<b>Seal</b>	B=NBR
<b>Orifice: Insert slot</b>	Stainless steel AISI series 300

## On request:

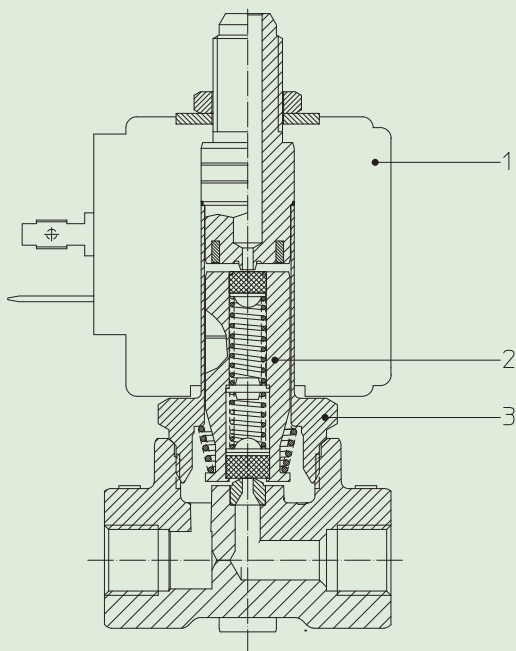
<b>Connector</b>	Pg 9 or Pg 11
<b>Connector conformity</b>	ISO 4400

## FEATURES:

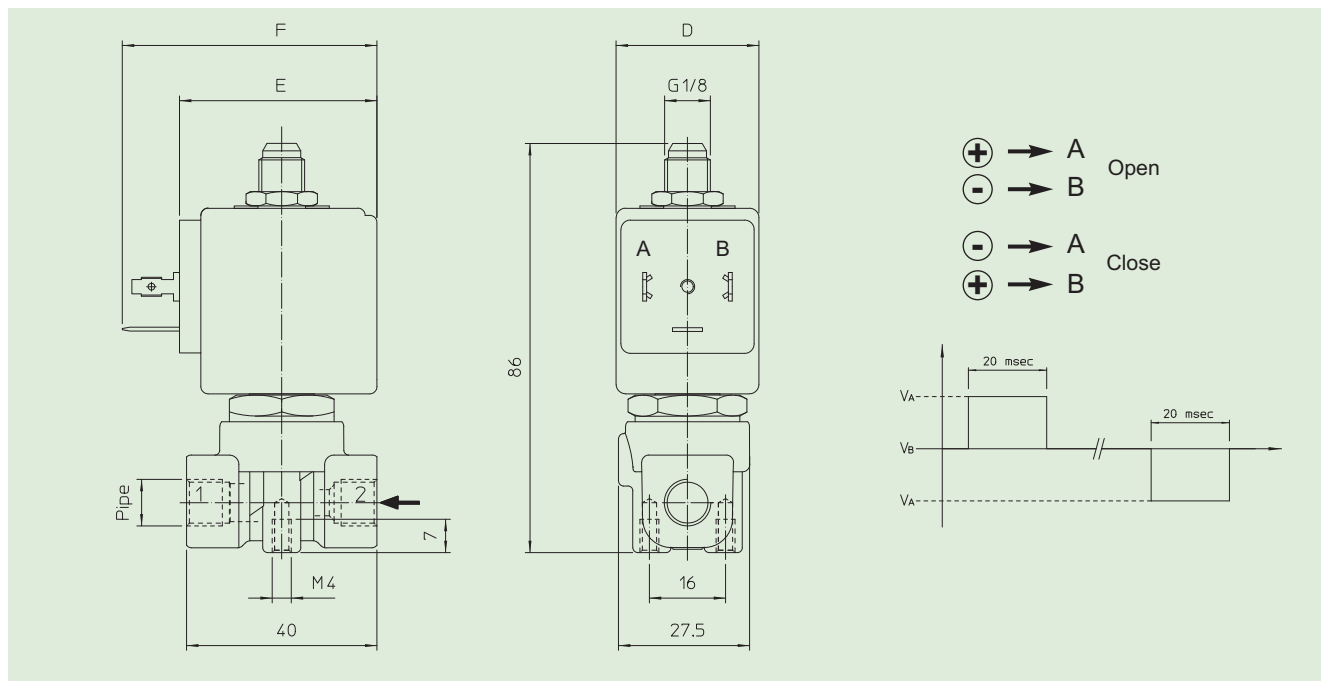
<b>Electrical conformity</b>	IEC 335
<b>Protection degree</b>	IP 65 EN 60529 (DIN 40050) with coil fitted by connector.

## SPARE PARTS:

- Coil:**  
BDA05006LS  
BDA05009LS  
BDA05012LS  
BDA05024LS
- Complete plunger:**  
Code R450689/B
- Complete armature tube:**  
Code R450664



## DIMENSIONS:



COIL TYPE	POWER ABSORPTION			DIMENSIONS		
	W ---	Hold VA ~	Inrush VA ~	D mm	E mm	F mm
B	5	10	15	30	42	54